

HIGH MATERNAL - MODERATE FRAMED - EFFICIENT

◆ DIAMOND D ANGUS ◆

VALIER, MT

2009 SIRE DIRECTORY

DDA Emblazon 27C



SEMEN FOR SALE

◆ Mark your calendar for our *"Pounds For Profit"* Sale
Thursday - November 12, 2009 ◆

1-800-932-6487

WWW.DIAMONDDANGUS.COM

What will Diamond D Angus Genetics do for you?



Mark DeBoo
4092 Valier-Dupuyer Road
1-406-279-3633
1-406-799-3480 cell
dda@3rivers.net



Don DeBoo
1133 Valier-Dupuyer Road
1-406-279-3563
ddangus@3rivers.net

Diamond D Angus would like to thank all of our past and future customers for believing in and supporting our program. Some might say we are out of the main stream. We have put a lot more emphases on functional and economic traits rather than EPD's. Our commercial industry needs great cattle, not cattle with great numbers. Breeding cattle with great numbers is easy. Breeding great cattle is a challenging task.

- ◆ **Consistency** - Diamond D Angus genetics will breed more true -- due to the many years of intensive line breeding.
- ◆ **Calving ease** - We have always put emphases on good calving ease. We typically will not use a bull on cows that we would not also use on first calf heifers.
- ◆ **Carcass - Ultrasound has proven that DDA cattle excel in the grass fed beef industry, and as always, are still suitable for the feed lot. Diamond D Angus cattle have proven to be consistently superior in tenderness.**
- ◆ **Efficiency** - For many years, the cows and calves have been weighed at weaning and conditions scores are given. Typically our cows are weaning calves weighing 50% of their own weight or greater. **We prefer a 4-frame cow weighing 1200 to 1300 pounds in good flesh.**
- ◆ **Longevity** - Most traits can be compared to a chapter in a book, but longevity is the entire book. Diamond D Angus has numerous cows that are still in the herd at the age of fifteen and beyond.
- ◆ **Experience** - We have the benefit of sixty years in the cattle business and forty one years in the registered Angus business.
- ◆ **Free shipping** – We offer free ground shipping on orders over \$1,500 and 50% off shipping on orders over \$1,000.



DDA Emblazon 27C

Calved 1/01/02 ♦ Reg. # 14257843 ♦ Tattoo 27C

OAS TRAVELER 23-4 #
DHD TRAVELER 6807 #
BEMINDFUL MAID DHD 0807 #

OCC EMBLAZON 854E +

REG 12514348 PBC 707 1M F0203 #

DIXIE ERICA OF C H 1019
DIXIE ERICA OF C H 615
SHOSHONE ERIC 1714

SHOSHONE 130-6357
SHOSHONE FRANCES 6357 #

DDA MELISA 824#

REG 13054587 BEAR OF WYE 6591

DDA MELISA 545

DDA MELISA 115 { # Fahren of Wye 5830
779 - (19 year old cow)

BW EPD	Milk EPD	Adj WW EPD	Adj YW EPD	Yrlg Scr EPD
89 +2.4	+21	654 +41	1164 +61	35.0 -.07
\$EN +14.35		\$W +33.88		

◆ We are happy to announce that DDA Emblazon 27C has been put to the test all across the U.S. and Canada and now in South America. He may be the thickest easiest fleshing bull we have ever seen, and he does it on 100% forage. Our top selling bull at our 2006 sale was a 27C son sold to Tallgrass Beef for \$13,000. His name is DDA Freeman 68F and is pictured on page 5. 27C is also the sire to DDA Fred E3G; the high selling bull at our 2007 sale. He sold to Ole Farms LTD, Athabasca, Alberta, Canada for \$14,500. Another 27C son, DDA Ledger E10H, was our highest selling bull in 2008. He sold to Clint Branger for \$9,500 and is pictured on page 7.

◆ DDA Emblazon 27C is a five frame bull weighing 2300 lbs. after the breeding season. He is an udder-fixer due to Shoshone 130, Bear and Fahren of Wye on the dam side and OCC Emblazon on the sire side. He traces to the same cow family as DDA Fahren 21X. Phenotypically this bull is very correct with great feet and legs. The average birth weight on his 77 bull calves is 79 pounds and 74 pounds on 67 heifer calves. Over the last four years the DDA Emblazon 27C sons have averaged \$4,397 at our fall sale.

"They have been by far the easiest fleshing and best disposition bulls, with great feet and legs, we have ever bought."

Rick Calvo



ORigen

BREEDER TO BREEDER GENETIC SERVICES



UNIVERSAL SEMEN SALES, INC.

DDA Fahren 21X

Calved 2/01/97 ♦ Reg. # 12773616 ♦ Tattoo 21X

FAVOUR OF WYE
FENLAND OF WYE
FINE OF WYE #

FAHREN OF WYE UMF 5830

REG 10762574 BUTLER OF WYE

FLORELLE OF WYE UMF 5229 #
FRANNIE OF WYE #
BEAR OF WYE UMF 6591

CARTY OF WYE UMF 6952
CLOVA OF WYE UMF 6686

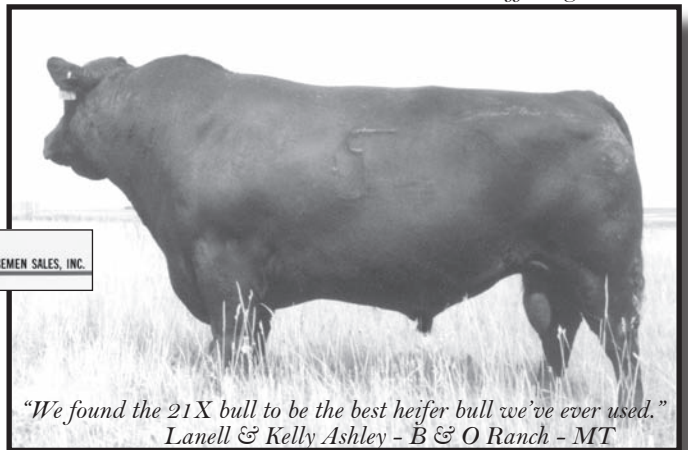
DDA MELISA 549

REG 12320123 MCGILL CREEK BLAZE 0241

DDA MELISA 381
DDA MELISA 115 { # Fahren of Wye 5830
779 - (19 year old cow)

BW EPD	Milk EPD	Adj WW EPD	Adj YW EPD	Yrlg Scr EPD
68 -2.0	+11	592 +28	1163 +49	39.0 +.29
\$EN +33.39		\$W +36.60		

We would like to thank John Balkenbush, Conrad, MT who originally bought 21X in our 1998 sale. Due to extreme drought he needed to disperse his cow herd and gave us the opportunity to buy 21X back. Since then John has built back a cow herd and is our top volume buyer of 21 X sons. At age eleven 21X was breaking down and we had to make the hard decision to end his suffering.



*"We found the 21X bull to be the best heifer bull we've ever used."
Lanell & Kelly Ashley - B & O Ranch - MT*

◆ DDA Fahren 21X is a line bred Fahren of Wye. The Fahren daughters we have are some of the best cows we have ever owned. They are deep, thick, and very functional with almost perfect udder quality. We have Fahren daughters that are very sound at 19 years of age. The temperament of his off spring is second to none. The calving ease in 21X is very real. No matter what breed he is used on, he seems to have exceptional calving ease. Not runts with no energy, but 70 lb calves with a lot of vigor. You will also want to use him on your cows and save every daughter he produces. Initial tests of his calves look great for grass fed beef. His semen is in high demand and has been used all across the USA with outstanding satisfaction. ◆ Don't miss this opportunity as semen is somewhat limited. At our last three sales his sons have averaged \$3,879. A top selling son, DDA Ledger 16G sold to Donnie & Trish Feiring of Beach ND for \$6,000. They had purchased another great 21X son, DDA Ledger 69D at our 2004 sale. High selling bull in our 2005 sale was a 21X son, DDA Hardgrass 18E, sold to Ben & Jennifer Dimond, Dimond Angus Ranch, SD and Bob Berger, NE for \$10,500.

To Order Call 1-800-932-6487

DDA Sure Enough 6D

Calved 1/18/03 ♦ Reg. # 14381036 ♦ Tattoo 6D

DHD TRAVELER 6807 #
OCC EMBLAZON 854E +
DIXIE ERICA OF CH 1019

DDA EMBLAZON 28A

REG 13647188

BEAR OF WYE UMF 6591

DDA ESTER 548
ESTER DIAMOND 217
LONESTAR OF WYE
BANJO OF WYE UMF 6413
BLACKBIRD OF WYE UMF 5362 #

DDA MARY 156

REG 14095693

FAHREN OF WYE UMF 5830
MARY DIAMOND 244
MISS DIAMOND HENRY 724 #

BW EPD	Milk EPD	Adj WW EPD	Adj YW EPD	Yrlg Scr EPD
74 +0.9	+23	702 +43	1220 +57	41.0 +1.67
\$EN +12.50	\$W +38.22			

- ◆ When you see the 6D daughters, it is hard not to like them. He is producing very moderate, easy fleshing mother cows with great temperament and udder quality. The 6D bull may be the softest tempered bull we have ever produced.
- ◆ The calving ease has been very good also. The average birthweight on his 67 bull calves born at DDA is 76 pounds and 72 pounds on his 77 heifer calves.
- ◆ His 45 sons sold over the last three years have averaged \$3,378.
- ◆ A great son, DDA Sure Shot 59D, sold to Ben Lyoning of WY for \$7,250 at our 2007 sale.



"The fleshing ability of these cattle has been bred in, not fed in."

DDA Fahren 5Z

Calved 1/20/99 ♦ Reg. # 13299980 ♦ Tattoo 5Z

FAVOUR OF WYE
FENLAND OF WYE
FINE OF WYE #

FAHREN OF WYE UMF 5830

REG 10762574

BUTLER OF WYE
FLORELLE OF WYE UMF 5229 #
FRANNIE OF WYE #
LEONID OF WYE#
CANDOR OF WYE UMF 7328
CLOVA OF WYE UMF 6723

DDA ZELDA 791

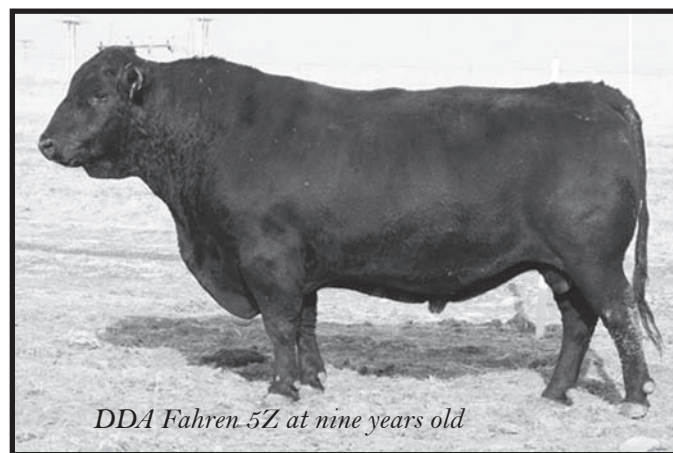
REG 12773582

BLACK BROWE JUMBO 37P
MISS DIAMOND JUMBO 580#
DIAMOND HENRETTA 368

BW EPD	Milk EPD	Adj WW EPD	Adj YW EPD	Yrlg Scr EPD
75 +0.9	+10	681 +24	1147 +36	39.0 +.23
\$EN +26.71	\$W +22.98			

- ◆ DDA Fahren 5Z pedigree is as good as it gets! If you like maternal, functional cattle, that flesh and last in the herd for many years, DDA Fahren 5Z would be a great choice. His mother is eleven years old, his grandmother (580) stayed in production until her death at 20 years and great grandmother (368) died at 22 years. The 5Z daughters in production are doing a great job.
- ◆ Sadly, in 2008, we had to put 5Z down due to an injury. He was just a few months shy of being ten years old. He was the soundest bull (at that age) that we have ever seen. We used more 5Z semen than any other sire. He was in a commercial herd most of his life but we had recently purchased him back to use in our own herd. ◆
- ◆ DDA Dazeler 2E is a 5Z son that we have chosen to use in our own herd. He has semen for sale and is listed on page 5 of this catalog.
- ◆ We are using three Fahren of Wye UMF 5830 sons in our own herd.

Looking back over all the years and all the bulls we have used Fahren of Wye UMF 5830 would certainly rise to the top.



DDA Fahren 5Z at nine years old

DDA Dazeler 2E

Calved 1/21/04 ♦ Reg. # 14663340 ♦ Tattoo 2E

FENLAND OF WYE
FAHREN OF WYE UMF 5830
FLORELLE OF WYE UMF 5229 #

DDA FAHREN 5Z

REG 13299980

CANDOR OF WYE UMF 7328 #+
DDA ZELDA 791

MISS DIAMOND JUMBO 580 #
DHD TRAVELER 6807 #

OCC EMBLAZON 854E #+
DIXIE ERICA OF C H 1019

DDA GINNY 209

REG 14226676

DDA BARTOR

DDA GINNY 604

DDA GINNY 401

BW EPD	Milk EPD	Adj WW EPD	Adj YW EPD	Yrlg Scr EPD
80 +3.0	+12	773 +51	1037 +72	35.0 +.25
\$EN +15.68		\$W +30.42		

♦ What a great pedigree! Line bred back to our old 580 and 368 cow family. Traces to Fahren twice, Black Browe Jumbo three times, Banjo once and 580 twice. He has depth, length and great fleshing ability, on strictly a forage diet. Structurally very correct with a great temperament. His bull calves at DDA have averaged 79 pounds at birth, while his heifers averaged 70 pounds.

♦ DDA Dazeler 2E has developed into a very impressive bull. He is 4.5 frame and about 2,200 pounds in great flesh after breeding season.

Mark your calendar for our next sale.
Thursday, November 12, 2009
Visitors are welcome at any time.



DDA Freeman 68F

Calved 3/28/05 ♦ Reg. # 15165535 ♦ Tattoo 68F

DHD TRAVELER 6807 #
OCC EMBLAZON 854E #+
DIXIE ERICA OF C H 1019

DDA EMBLAZON 27C

REG 14257843

SHOSHONE 130-6357

DDA MELISSA 824

DDA MELISA 545 #

UMF ACTION OF WYE 7090

DDA ACTION 21-6

MISS DIAMOND CHANCE 779 #

KERRY 282 DDA

REG 14095608

FAHREN OF WYE UMF 5830

DDA KERRY 834

DDA KERRY 680 #

BW EPD	Milk EPD	Adj WW EPD	Adj YW EPD	Yrlg Scr EPD
80 +1.7	+20	706 +40	917 +59	35.0 +.11
\$EN +11.30		\$W +30.39		

♦ DDA Freeman 68F is an exceptionally deep, thick, moderate framed son of DDA Emblazon 27C. He traces back multiple times to old Wye genetics, and exhibits the classic Bonsma body type that is working so well in the grass fed industry. He performed very well in his ultrasound data with a 0.71 RES, 3.89 IMF, and a 24 Tenderness Score.

♦ Owned by Tallgrass Beef of Sedan, Kansas and Diamond D Angus.

Visitors are always welcome at the ranch.

Give us a call and we will be happy to show you around.



Are you or your customers interested in selling feeder cattle for a good premium?

Tallgrass Beef Company is offering an above market premium for consistently bred Diamond D Angus cattle.

For more information contact Tallgrass Beef through their web site at www.tallgrassbeef.com

To Order Call 1-800-932-6487

DDA Ledger 76E

Calved 3/12/04 ♦ Reg. # 14663459 ♦ Tattoo 76E

FENLAND OF WYE
FAHREN OF WYE UMF 5830
FLORELLE OF WYE UMF 5229 #

DDA FAHREN 21X

REG 12773616

CARTY OF WYE UMF 6952
DDA MELISA 549
DDA MELISA 381
LEONID OF WYE #
BARTOR OF WYE UMF 5609
BAYETTE OF WYE #

DDA ZELDA 409

REG 12094295

BLACK BROWE JUMBO 37P
MISS DIAMOND JUMBO 580 #
DIAMOND HENRETTA 368

BW	EPD	Milk	EPD	Adj	WW	EPD	Adj	YW	EPD	Yrlg	Scr	EPD
70	-4.0	+8		609	+14		806	+28		xx		+0.8
\$EN +30.40		\$W +19.73										

- ♦ What a great cow family on this 21X son. His mother will have her 14th calf at Diamond D Angus this next spring. Her mother, the 580 cow, stayed in production until she was 20 and her mother, the 368 cow, till she was 22 years old.
- ♦ 76E has great depth and length. He is very correct on his feet and legs and is a great athlete. ♦ It appears that 21X has passed on great calving ease. DDA Ledger 76E sons averaged 74 pounds at birth and his heifer calves averaged 69 pounds.
- ♦ 76E has just a tick more frame than 21X.

High Maternal - Moderate Framed - Efficient

Many years ago, my dad, Don, told me, "We were going to breed cattle with these functional traits in mind, even if this meant not selling another bull." It was not the popular thing to do at that time.

We now know it was the right thing to do.....Mark DeBoo

The bulls at Diamond D Angus have not been fattened in a feed lot. We do not use growth stimulants or growth hormones.



DDA Favour 26F

Calved 3/19/05 ♦ Reg. # 15435944 ♦ Tattoo 26F

CAREER OF WYE
LODGE OF WYE
LORENA OF WYE

FAVOUR OF WYE

REG 6418161

VALOUR OF ARDRASS
FLORILLA OF WYE
PAMELA G OF WYE
LAMB DIN OF WYE UMF 6278
BEAR OF WYE UMF 6591
BLACKBIRD OF WYE UMF 6324 #

DDA ZELDA 421

REG 12094274

FAHREN OF WYE UMF 5830
ZELDA DIAMOND 902 #
MISS DIAMOND JUMBO 580 #

BW	EPD	Milk	EPD	Adj	WW	EPD	Adj	YW	EPD	Yrlg	Scr	EPD
82	-1.3	+4		593	+14		817	+17		xx		+0.3
\$EN +36.46		\$W +19.44										

- ♦ We have preserved some of the very best maternal Wye lines in his pedigree. Favour of Wye is the grand sire to Fahren of Wye. We feel that much of the good in Fahren is coming from Favour.
- ♦ The dam to 26F is also the dam to our DDA Broadside 52B. His grand dam, the 902 cow, was the mother to DDA Bartor 47 who left great daughters in the herd. Her mother, the 580 cow, who stayed in production till she was 20 and her mother, the 368 cow, until 22 years of age. When I think of the maternal goodness and longevity in this pedigree only one thing comes to mind, **Wow!**
- ♦ Calving ease looks very good. The average birthweight on his bull calves at DDA is 71 pounds and his heifer calves averaged 67 pounds.

Diamond D Angus frequently has cattlemen calling in search of females with the Diamond D Angus influence. If you have females with DDA influence and would like to market them, please contact us and we will help find a home for them.



Hyland BC 0668

Calved 3/11/06 ♦ Reg. # 15528673+ ♦ Tattoo 0668

FABRON OF WYE
CAREER OF WYE
CLARICE OF WYE +

LODGE OF WYE

REG 4020202

PRINCE OF MALPAS +
LORENA OF WYE
DEVOTION OF WYE
LEONID OF WYE #
MISTIC OF VOLGA 2018 +
MARGARET OF VOLGA 9009 #

HYLAND BARBARA 0266 #+

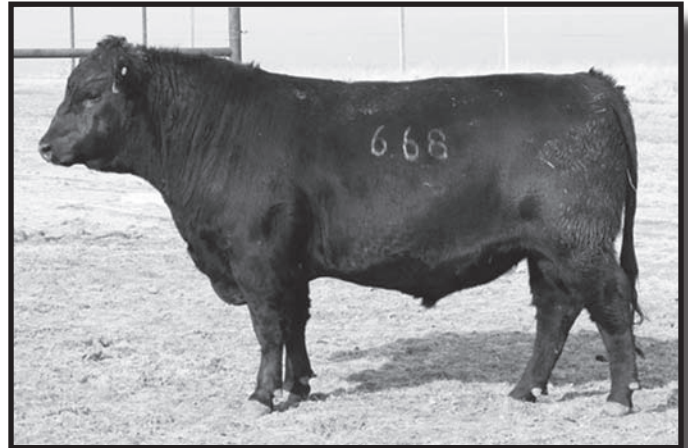
REG 14304783

LEROY OF VOLGA 9874
BARBARA OF VOLGA 2094
BARBARA OF VOLGA 9835

BW EPD	Milk EPD	Adj WW EPD	Adj YW EPD	Yrlg Scr EPD
84 +0.7	+8	669 +30	978 +27	xx +.03
\$EN +30.23		\$W +28.72		

- ◆ This is the first bull that we have purchased in seven years. When we saw this great pedigree, we thought what an opportunity to continue lining up the same goodness that Fahren came from. His dam is line bred good old Wye and Rito 707, she is truly a great maternal cow.
- ◆ His sire, Lodge of Wye, is one of the very few sires that has been proven genetic defect free. Lodge of Wye also ranks #2 in the entire breed for \$EN.
- ◆ Rick used this bull in South Dakota in the spring. As a yearling, we used him as clean up at Diamond D Angus. I believe he has gained weight the entire time.
- ◆ Across the board his ultrasound numbers looked great, including tenderness at a 26 and all other categories in the blue.
- ◆ Co-owned with Hyland Angus

"Quite a few years ago we started a program of keeping records for temperament in our cattle. Considering the safety of the crew and the ease of handling the cattle, we feel it's well worth our time to score and cull animals that don't meet the standards we have set."



Testimonials About Diamond D Angus....

"After looking at thousands of yearling steers, bulls and heifers through the Upper Midwest for inclusion into our 100% grass fed beef program, I am very impressed with DDA influenced cattle. They have the right combination of fine muscle texture, tenderness, marbling, limited connective tissue, carcass yield and temperament. I purchased several 24 month old open heifers in May of 2007. Even after the stress of the 1,000 mile trip to Minnesota, they were calm and all graded Choice. These heifers were not "finished" the way we normally finish yearlings, on dairy quality hay and balage, they were run with the cow herd!

I am recommending that all our finishers seriously consider sourcing DDA-influenced calves and yearlings for the following reasons: 1.) Excellent disposition and meat/carcass traits 2.) Excellent ADG on forage only diets (DDA is one of very few seedstock suppliers that feeds no grain and no corn silage.) 3.) Line-bred for consistency.

Please contact me at todd@thousandhillscattleco.com or 612-756-1346 if you have calves or yearlings for sale."

Todd Churchill, owner
Thousand Hills Cattle

Mark,

It sure was good to see the DeBoo Angus cow herd again. I like what I see! 21X has left some beautiful daughters as well as OCC Emblazon. What a great compliment to Fahren genetics. To see that much maternal, function and pounds in an extremely moderate package is almost unbelievable. 27C and 28A will make a great contribution.

Dr. Ron Bolze
Blair, Nebraska

To Order Call 1-800-932-6487

The Diamond D Angus Story

I am the third generation DeBoo raising functional Angus cows. It all started with my grandfather and grandmother (Charlie and Mary) in the 1950's. At that time, Charles was the only registered Angus breeder in the Golden Triangle area of Montana. In the early days, he owned a bull called Pattern of Wye. Pattern of Wye was instrumental in shaping the future for DDA.

In 1972, my grandfather's life was cut short after hip replacement surgery. He died less than 24 hours later.

My dad and mom (Don and Janet) were married in 1957 and started raising cows on shares with my grandparents, on a small ranch 10 miles southwest of Valier. My Mom and Dad raised 7 kids on this small operation. Needless to say, everyone needed to learn how to work and be very thrifty and efficient. That also included the cows.

In 1962, my Mom and Dad bought their first registered Angus heifers. They continued raising commercial cattle at that time. Due to the influence from Pattern of Wye, my Dad learned that all cows were not created equally. In the 1960's, most cattle were very short and blocky; they would have been a frame score of 1 or maybe in the negative figures. The Wye cattle were the larger framed cattle for the time period. The industry trend changed in the late 60's and early 70's to larger framed cattle and the Wye cattle became very popular. There were a lot of very functional cattle at that time. The trend continued to go larger and larger framed in the late 70's and 80's. My parents tried to follow the trend until the early 1980's.

I am very thankful that at that time my parents knew what a really good functional Angus cow was like. It did not take them long to understand the direction the industry was headed and this was not the path they wanted to be on. Due to the influence of the Pattern of Wye bull in the early 70's and the direction the whole industry was headed, Diamond D Angus knew they didn't want to follow this route. They decided with the knowledge of the old Pattern Bull, they would once again go to the Wye herd for their genetics. My parents spent many years selling bulls private treaty to repeat commercial buyers.

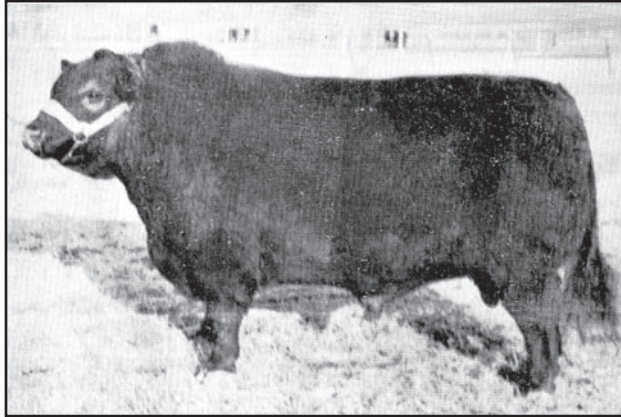
After working 6 years as a mechanic for John Deere, I (Mark) moved back to the ranch in 1988. We had our 1st production sale in the spring of 1989 in an old barn. Looking at it today, I still wonder how we did it. At that time, we were selling about 50 bulls at the sale. Perhaps our competition was averaging more per bull than we were, for it was the start of the big EPD race.

We continued to line breed for functional, maternal and efficient traits. This was not a popular or easy path to be on at the time. I am 100% convinced it was the proper path to take.

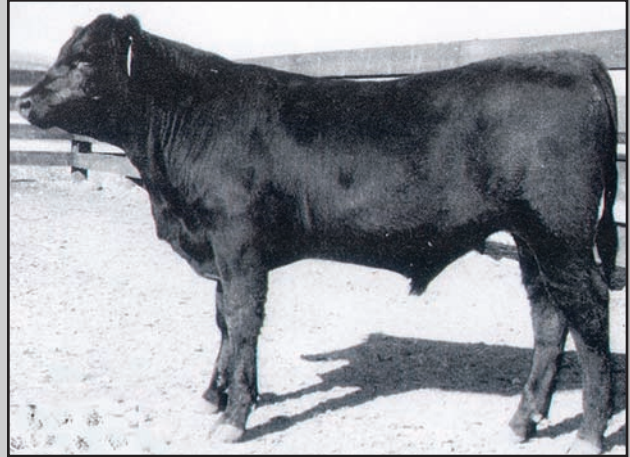
In 2006, we had our first fall production sale where we sold long yearling forage developed bulls. I would challenge any registered breeder to forage test your bulls if you really want to know what they are made of. This has proven to be a very good change for DDA. In recent years, we are selling our genetics all over the US, Canada, and Argentina.

We now sell about 110 bulls every fall and about 100 bred females at our production sale. This is our 4th annual Sire Directory where we offer our time-tested line bred genetics.

Industry Extremes!!! DDA hasn't followed the trends.



1966



2001

DIAMOND D ANGUS GENETICS PROVEN OVER TIME!

Pattern of Wye was purchased by Charles and Mary DeBoo in 1968 and from this bull Diamond D Angus used a son and many other bulls with similar traits.



Pattern of Wye - 1968



DDA Fahren 21X - 2003



DDA Emblazon 27C - 2006



832 Cow

These animals have natural thickness from breeding, not feeding.

To Order Call 1-800-932-6487

Grass Fed Beef at Diamond D Angus

The cattle here at Diamond D Angus remain consistent over generations because we have followed the same reliable program for many years. Our breeding program has proven that you don't need to breed for extreme numbers to have great cattle. We feel that if you breed for extremes, you will lose the basic traits which make the Angus mother cow great. The only extremes you will find at Diamond D Angus are extremely functional, efficient cows.

The grass-fed beef market is an additional benefit here at the ranch. Diamond D Angus has "proven genetics" which are suitable for the grass-finished beef market, and as always, are still suitable for the feedlot. Ultrasound and research have confirmed that these cattle are superior in tenderness.

Remember, efficiency has more to do with profit than any other trait. We have blended a unique combination of economic

type traits designed for the commercial cattlemen, feed-lots, and packers, which will be an outcross to most herds.

In Northwestern Montana we are still experiencing a drought, but thanks to the fleshing ability of our cattle, our cows, calves, and long yearling bulls look great without supplement or creep.

If you like good, maintenance-free Angus cattle, plan to attend our Pounds for Profit Sale Thursday, November 12, 2009. You will not be disappointed!

COW / CALF RATIO

We calculate adjusted wean efficiency for each cow/calf pair. Adjusted wean efficiency is computed as the ratio of calf's adjusted 205 day weight to the cows adjusted weight. The adjusted cow weight is estimated by a process of rating each cow's body condition and giving her a score. A score of "5" is the median (no adjustment taken), 80 pounds is subtracted from her weight for a score of "6" and 80 pounds is added to her weight for a score of "4". By adjusting cow weights to equal body condition scores, it rewards cows that produce a bigger calf while maintaining her own body condition. Adjusted cow / calf ratio is shown for each sale bull in the fall sale catalog.

American Angus Association Cow Energy Value (\$EN)

A Cow Energy Value (\$EN) is available with the Spring, 2005 EPD release to assess differences in cow-energy requirements, expressed in dollars per cow per year, as an expected dollar savings difference in future daughters of sires. A larger value is more favorable when comparing two animals.

The bulls pictured in this catalog have an average of +23.45 (\$EN), and the industries' average on bulls is +3.36 (\$EN). In this example, the expected difference would be $+23.45 - +3.36 = +20.09$ savings per year per animal.

After analyzing the new (\$EN) number and (\$W) number from the American Angus Association, we were curious how the DDA Fahren 21X's numbers would stack-up compared to all the bulls in the breed. We entered 21X's numbers and asked the database to find all the bulls that were as good as, or better than, the 21X bull. In the entire Angus breed, there were no bulls that could beat him.

In the past, the American Angus Association has had many numbers to measure production. Cattle with the most production also require the most inputs. It is very good to see the association develop a number that could help with profit, not just production.

Temperament & Udder Scores

Diamond D Angus feels it's very important to record temperament and udder scores. There are no EPD's on some of these very important traits. Considering the safety of the crew and the ease of handling the cattle, we feel it's well worth our time to score and cull the animals that don't meet the standards we have set. The performance, efficiency, and meat quality will improve with docile cattle.

There is no such thing as a perfect cow, and you have to decide which traits you want or need.

A few years ago we started a program of keeping records on the temperament and udder qualities of our females. We score them from 1 to 5 in each category.

UDDER

- 1 Very good.
- 2 Above average.
- 3 Average.
- 4 Capable of raising a calf.
- 5 A non functional animal.

TEMPERAMENT

- 1 Calm.
- 2 Slightly restless, shifting.
- 3 Squirming and occasionally shaking the squeeze chute.
- 4 Continuous vigorous movement.
- 5 Berserk, rearing twisting.

Semen Price List

free ground shipping on orders over \$1,500; 50% off shipping on orders over \$1,000

NAME	REGISTRATION	SEMEN	CERTIFICATE	VOLUME
DDA Emblazon27C	#14257843	\$20	\$35	_____
DDA Fahren 21X	#12773616	\$20	\$35	_____
DDA Emblazon 28A	#13647188	\$20	\$35	_____
DDA Sure Enough 6D	#14381036	\$20	\$35	_____
Carty of Wye UMF 6952	#11773159	\$50	\$35	_____
DDA Fahren 5Z	#13299980	\$15	\$35	_____
DDA Dazeler 2E	#14663340	\$20	\$35	_____
DDA Freeman 68F	#15165535	\$20	\$35	_____
DDA Action 21-6	#12538905	\$12	\$35	_____
DDA Ambush 20Y	#13058668	\$12	\$35	_____
DDA Banjo 2124	#11789346	\$15	\$35	_____
Paramont Ambush 2172	#10239760	\$50	\$35	_____
Belview of Wye	#10748976	\$30	\$35	_____
DDA Banjo 1101	#11603400	\$50	\$35	_____
Buckwald of Wye	#10916619	\$12	\$35	_____
High Valley 4C6 Ambush	#12240901	\$50	\$35	_____
DDA Banjo E2B	#13825814	\$20	\$35	_____
DDA Banjo 10B	#13825698	\$15	\$35	_____
Band 234 of Ideal	#8505294	\$70	\$35	_____
DDA Ledger 76E	#14663459	\$15	\$35	_____
DDA Favour 26F	#15435944	\$15	\$35	_____
Hyland BC 0668	#15528673	\$20	\$35	_____

SELECT EMBRYOS FOR SALE

***Prices subject to change without notice. *10% DISCOUNT on orders over \$1,000.**

Call, Write or E-mail your order to: **DIAMOND D ANGUS**

Mark DeBoo ——— 1-406-279-3633 ——— 1-406-279-3591 fax ——— dda@3rivers.net

Don DeBoo ——— 1-406-279-3563 ——— 1-800-932-6487 ——— ddangus@3rivers.net

1133 Valier Dupuyer Rd., Valier, MT 59486

www.diamonddangus.com

PREMIUMS BEING PAID FOR DIAMOND D ANGUS GENETICS

Todd Churchill, Owner
Thousand Hills Cattle Company
612-756-1346
todd@thousandhillscattleco.com
www.thousandhillscattleco.com

Dr. Allen Williams, Tallgrass Beef
662-312-6826
662-324-5172 - cell
Tallgrass Office - 877-822-8283
www.tallgrassbeef.com

**are currently looking to buy stock and pay a premium for cattle
that carry Diamond D Angus Genetics**

Catalog by Mountain View Publishing - mtvp@q.com - 1-406-727-9067

To Order Call 1-800-932-6487

*Thank you to our past customers!
We'll see you Thursday, Nov. 12, 2009
at our "Pounds for Profit" Sale!*



“POUNDS FOR PROFIT” SALE

Thursday - November 12, 2009
At the Ranch, Valier, Montana
Lunch Served at 11:30 a.m.

220 BLACK ANGUS SELL

- ◆ 110 Forage Tested Registered Long Yearling Bulls
- ◆ 10 Registered Bull Calves
- ◆ 100 Bred Females

(50 first calf heifers & 50 mixed age cows)

PRSRT STD
AUTO
U.S. POSTAGE
PAID
Lewistown, MT
Permit No. 181

Diamond D Angus
Don & Janet DeBoo
Mark & Cathy DeBoo
1133 Valier-Dupuyer Road
Valier, MT 59486