

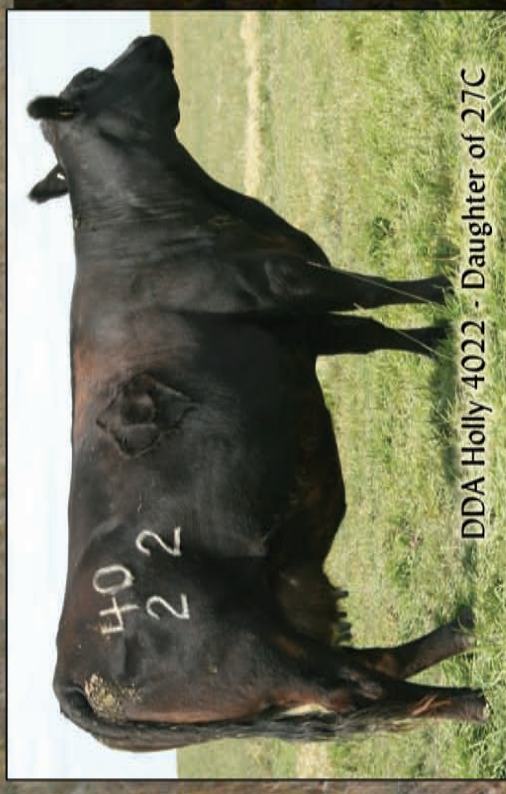


Semen for Sale

- ◆ High Maternal
- ◆ Moderate Framed
- ◆ Efficient



DDA Emblazon
27C



DDA Holly 4022 - Daughter of 27C

Sire2Directory

What will Diamond D Angus Genetics do for you?



Mark DeBoo
4092 Valier-Dupuyer Road
1-406-279-3633
1-406-799-3480 cell
dda@3rivers.net



Don DeBoo
1133 Valier-Dupuyer Road
1-406-279-3563
ddangus@3rivers.net



David Christian
1-406-279-3233
1-307-277-2952 cell

Diamond D Angus would like to thank all of our past and future customers for believing in and supporting our program. Some might say we are out of the main stream. We have put a lot more emphases on functional and economic traits rather than EPD's. Our commercial industry needs great cattle, not cattle with great numbers. Breeding cattle with great numbers is easy. Breeding great cattle is a challenging task.

- ◆ **Consistency** - Diamond D Angus genetics will breed more true -- due to the many years of intensive line breeding.
- ◆ **Calving ease** - We have always put emphases on good calving ease. We typically will not use a bull on cows that we would not also use on first calf heifers.
- ◆ **Carcass** - Ultrasound has proven that DDA cattle excel in the grass fed beef industry, and as always, are still suitable for the feed lot. Diamond D Angus cattle have proven to be consistently superior in tenderness.
- ◆ **Efficiency** - For many years, the cows and calves have been weighed at weaning and conditions scores are given. Typically our cows are weaning calves weighing 50% of their own weight or greater. We prefer a 4-frame cow weighing 1200 to 1300 pounds in good flesh.
- ◆ **Longevity** - Most traits can be compared to a chapter in a book, but longevity is the entire book. Diamond D Angus has numerous cows that are still in the herd at the age of fifteen and beyond.
- ◆ **Experience** - We have the benefit of sixty one years in the cattle business and forty two years in the registered Angus business.
- ◆ **Free shipping** – We offer free ground shipping on orders over \$1,500 and 50% off shipping on orders over \$1,000.

Diamond  **ngus**

DDA Emblazon 27C

Calved 2/01/02 ♦ Reg. # 14257843 ♦ Tattoo 27C

QAS TRAVELER 23-4 #
 DHD TRAVELER 6807 #
 BEMINDFUL MAID DHD 0807 #
OCC EMBLAZON 854E # +
 REG 12514348 PBC 707 1M F0203 #
 DIXIE ERICA OF C H 1019
 DIXIE ERICA OF C H 615
 SHOSHONE ERIC 1714
 SHOSHONE 130-6357
 SHOSHONE FRANCES 6357 #

DDA MELISA 824#

REG 13054587

BEAR OF WYE 6591
 DDA MELISA 545
 DDA MELISA 115 { # Fahren of Wye 5830
 # 779 - (19 year old cow)

BW EPD	Milk EPD	Adj WW EPD	Adj YW EPD	Yrlg Scr EPD
89 +2.0	+17	654 +38	1164 +61	35.0 -16
\$EN +16.89	\$W +30.43			

♦ We are happy to announce that DDA Emblazon 27C has been put to the test all across the U.S. and Canada and now in South America. He may be the thickest easiest fleshing bull we have ever seen, and he does it on 100% forage. Our top selling bull at our '06 sale was a 27C son sold to Tallgrass Beef for \$13,000. His name is DDA Freeman 68F. 27C is also the sire to DDA Fred E3G, the high selling bull at our '07 sale. He sold to Ole Farms LTD, Athabasca, Alberta, Canada for \$14,500. Another 27C son, DDA Ledger E10H, was our highest selling bull in '08. He sold to Clint Branger for \$9,500. At our '09 sale, 27C's top selling son was DDA Freeman 94I, selling to Neal Wanless of SD for \$8,250. ♦ DDA Freeman 57J was our high selling bull at our 2010 sale. He is a 27C son sold to Ole Farms in Alberta, Canada for \$10,000. ♦ DDA Emblazon 27C is a five frame bull weighing 2300 lbs. after the breeding season. He is an udder-fixer due to Shoshone 130, Bear and Fahren of Wye on the dam side and OCC Emblazon on the sire side. He traces to the same cow family as DDA Fahren 21X. Phenotypically, this bull is very correct with great feet and legs. At DDA, the average birth weight on his 104 bull calves is 79 pounds and 75 pounds on 95 heifer calves. Over the last six years the DDA Emblazon 27C sons have averaged \$4,240 at our fall sale.



ORigen
 BREEDER TO BREEDER GENETIC SERVICES



DDA Melisa 824
Mother to
27C and E5H

DDA Fahren 21X

Calved 2/01/97 ♦ Reg. # 12773616 ♦ Tattoo 21X

FAVOUR OF WYE
 FENLAND OF WYE
 FINE OF WYE #
FAHREN OF WYE UMF 5830
 REG 10762574 BUTLER OF WYE
 FLORELLE OF WYE UMF 5229 #
 FRANNIE OF WYE #
 BEAR OF WYE UMF 6591
 CARTY OF WYE UMF 6952
 CLOVA OF WYE UMF 6686

DDA MELISA 549

REG 12320123

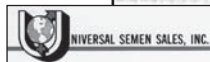
MCGILL CREEK BLAZE 0241
 DDA MELISA 381 #
 DDA MELISA 115 { # Fahren of Wye 5830
 # 779 - (19 year old cow)

BW EPD	Milk EPD	Adj WW EPD	Adj YW EPD	Yrlg Scr EPD
68 -2.0	+13	592 +27	1163 +50	39.0 +26
\$EN +31.63	W +36.54			

♦ DDA Fahren 21X is a line bred Fahren of Wye. The Fahren daughters we have are some of the best cows we have ever owned. They are deep, thick, and very functional with almost perfect udder quality. We have Fahren daughters that are very sound at 19 years of age. The temperament of his off spring is second to none. You will also want to use him on your cows and save every daughter he produces. Initial tests of his calves look great for grass fed beef. His semen is in high demand and has been used all across the USA with outstanding satisfaction.

♦ Don't miss this opportunity as semen is somewhat limited.

♦ At our last six sales his sons have averaged \$3,882. A top selling son, DDA Ledger 16G sold to Donnie & Trish Feiring of Beach, ND for \$6,000. They had purchased another great 21X son, DDA Ledger 69D at our 2004 sale. High selling bull in our 2005 sale was a 21X son, DDA Hardgrass 18E, sold to Ben & Jennifer Dimond, Dimond Angus Ranch, SD and Bob Berger, NE for \$10,500.



DDA Fahren 21X
Daughter

DDA Lodge E5H

Calved 2/14/07 ♦ Reg. # 15974013 ♦ Tattoo E5H

FABRON OF WYE
CAREER OF WYE
CLARICE OF WYE +

LODGE OF WYE

REG 4020202

PRINCE OF MALPAS +
LORENA OF WYE
DEVOTION OF WYE
SHOSHONE ERIC 1714
SHOSHONE 130-6357
SHOSHONE FRANCES 6357 #

DDA MELISA 824

REG 13054587

BEAR OF WYE UMF 6591
DDA MELISA 545
DDA MELISA 115 { # Fahren of Wye 5830
779 - (19 year old cow)

BW EPD	Milk EPD	Adj WW EPD	Adj YW EPD	Yrlg Scr EPD
82 +3.0	+6	542 +21	n/a I+28	n/a I-.08
\$EN +32.90	\$W +18.10			

◆ What an outstanding individual DDA Lodge E5H is. He is very deep, long and thick. He has a great temperament and very good feet and legs. He is a maternal brother to 27C. His sire is Lodge of Wye. Lodge is one of twelve bulls in the entire breed that has been proven genetic defect free.

◆ We are using him heavier than I have ever used any young sire, both AI and natural.



DDA Melisa 808
at two years old.
Full sister to
E5H

MH Mick 53

Calved 3/27/05 ♦ Reg. # 15993873 ♦ Tattoo 53

QAS TRAVELER 23-4 #
DHD TRAVELER 6807 #
BEMINDFUL MAID DHD 0807 #

OCC EMBLAZON 854E # +

REG 12514348

PBC 707 1M F0203 #
DIXIE ERICA OF C H 1019
DIXIE ERICA OF C H 615
LAMB DIN OF WYE UMF 6278
BEAR OF WYE UMF 6591
BLACKBIRD OF WYE UMF 6324 #

DDA MELISA 545

REG 12320119

FAHREN OF WYE UMF 5830
DDA MELISA 115
MISS DIAMOND CHANCE 779 #

BW EPD	Milk EPD	Adj WW EPD	Adj YW EPD	Yrlg Scr EPD
n/a I+1.8	+13	n/a I+23	n/a I+43	n/a I-0.16
\$EN +22.71	\$W +20.67			

◆ You would have to see Mick to get a feel for how much depth and volume he has. I am very impressed with this bull. His mother is our 545 cow, sold to Monte Howrey many years ago. She is also the Grand Dam to 27C.

◆ Mick was raised in the very non-pampered environment of North Dakota. His body condition is the result of a 100% forage diet, like all of the Diamond D Angus' cattle.

◆ We already have a growing market for semen on Mick in South America.

◆ Co-owned with Monte Howrey, South Dakota.

*The bulls at Diamond D Angus
have not been fattened in a feed lot.*

We do not use growth stimulants or growth hormones.



DDA Fahren 5Z

Calved 1/20/99 ♦ Reg. # 13299980 ♦ Tattoo 5Z

FAVOUR OF WYE
FENLAND OF WYE
FINE OF WYE #

FAHREN OF WYE UMF 5830

REG 10762574

BUTLER OF WYE
FLORELLE OF WYE UMF 5229 #
FRANNIE OF WYE #
LEONID OF WYE #
CANDOR OF WYE UMF 7328

CLOVA OF WYE UMF 6723

DDA ZELDA 791

REG 12773582

BLACK BROWE JUMBO 37P
MISS DIAMOND JUMBO 580#
DIAMOND HENRETTA 368

BW EPD	Milk EPD	Adj WW EPD	Adj YW EPD	Yrlg Scr EPD
75 +1.1	+7	681 +29	1147 +41	38.0 +.20
\$EN +29.94	\$W +26.02			

♦ DDA Fahren 5Z's pedigree is as good as it gets! If you like maternal, functional cattle, that flesh and last in the herd for many years, DDA Fahren 5Z would be a great choice. His mother is fourteen years old, his grandmother (580) stayed in production until her death at 20 years and great grandmother (368) died at 22 years. The 5Z daughters in production are doing a great job. ♦ Sadly, in 2008, we had to put 5Z down due to injury. He was just a few months shy of being ten years old. He was the soundest bull (at that age) we have ever seen. We used more 5Z semen than any other sire. He was in a commercial herd most of his life but we had recently purchased him back to use in our own herd. ♦ DDA Dazeler 2E is a 5Z son that we have chosen to use in our own herd. He has semen for sale and is listed on page 6 of this catalog. ♦ A top 5Z son sold for \$6,000 to Neal Wanless of SD in our 2010 sale. ♦ We are using three Fahren of Wye UMF 5830 sons in our own herd.



DDA Fahren 5Z Daughter



Hyland BC 0668

Calved 3/11/06 ♦ Reg. # 15528673 ♦ Tattoo 0668

FABRON OF WYE
CAREER OF WYE
CLARICE OF WYE +

LODGE OF WYE

REG 4020202

PRINCE OF MALPAS +
LORENA OF WYE
DEVOTION OF WYE
LEONID OF WYE #

MISTIC OF VOLGA 2018 +
MARGARET OF VOLGA 9009 #

HYLAND BARBARA 0266 #+

REG 14304783

LEROY OF VOLGA 9874
BARBARA OF VOLGA 2094
BARBARA OF VOLGA 9835

BW EPD	Milk EPD	Adj WW EPD	Adj YW EPD	Yrlg Scr EPD
84 +1.8	+11	669 +30	978 +32	37.5 -.36
\$EN +29.59	\$W +30.39			

♦ This is the first bull that we have purchased in seven years. When we saw this great pedigree, we thought what an opportunity to continue lining up the same goodness that Fahren came from. His dam is line bred good old Wye and Rito 707. She is truly a great maternal cow.
♦ His sire, Lodge of Wye, is one of the very few sires that has been proven genetic defect free. Lodge of Wye also ranks #2 in the entire breed for \$EN.
♦ Co-owned with Hyland Angus. Rick used this bull in South Dakota in the spring. As a yearling, we used him as clean up at Diamond D Angus. I believe he has gained weight the entire time.
♦ We used this bull very heavy the last two years, both AI and natural.
♦ Across the board his ultrasound numbers looked great, including tenderness at a 26 and all other categories in the blue.

Mark your calendar for our next sale.
Thursday, November 10, 2011
Visitors are welcome at any time.



DDA Sure Enough 6D

Calved 1/18/03 ♦ Reg. # 14381036 ♦ Tattoo 6D

DHD TRAVELER 6807 #
OCC EMBLAZON 854E #+
DIXIE ERICA OF CH 1019

DDA EMBLAZON 28A

REG 13647188

BEAR OF WYE UMF 6591
DDA ESTER 548

ESTER DIAMOND 217
LONESTAR OF WYE

BANJO OF WYE UMF 6413

BLACKBIRD OF WYE UMF 5362 #

DDA MARY 156

REG 14095693

FAHREN OF WYE UMF 5830

MARY DIAMOND 244

MISS DIAMOND HENRY 724 #

BW EPD	Milk EPD	Adj WW EPD	Adj YW EPD	Yrlg Scr EPD
74 +1.4	+22	702 +45	1220 +59	41.0 +1.66
\$EN +10.51		\$W +36.03		

DDA Sure Enough 6D Daughter



- ♦ DDA Sure Enough 6D is producing daughters with great mothering ability, very feminine and great udder quality. They are also among some of the softest tempered cattle you will find anywhere. ♦ Calving ease has been good. The average birthweight on his 72 bull calves born at DDA is 77 pounds and the 89 heifer mates averaged 73 pounds. ♦ His sons sold over the last six years have averaged \$3,569.
- ♦ A great son, DDA Sure Shot 59D, sold to Ben Lyoning of WY for \$7,250 at our 2007 sale. 6D is also the sire to DDA Sure Shot 61, the high selling bull at our 2009 sale. He sold to Neal Wanless of SD for \$7,500.

DDA Freeman 68F

Calved 3/28/05 ♦ Reg. # 15165535 ♦ Tattoo 68F

DHD TRAVELER 6807 #
OCC EMBLAZON 854E #+
DIXIE ERICA OF CH 1019

DDA EMBLAZON 37C

REG 14257843

SHOSHONE 130-6357

DDA MELISA 824 #

DDA MELISA 545

UMF ACTION OF WYE 7090

DDA ACTION 21-6

MISS DIAMOND CHANCE 779 #

KERRY 282 DDA

REG 14095608

FAHREN OF WYE UMF 5830

DDA KERRY 834

DDA KERRY 680 #

BW EPD	Milk EPD	Adj WW EPD	Adj YW EPD	Yrlg Scr EPD
80 +2.4	+18	706 +38	917 +66	35.0 +0.08
\$EN +10.76		\$W +24.64		



- ♦ What a great maternal pedigree! 68F was bought by Tallgrass Beef in the fall of 2006. He's been in Mississippi ever since and has adapted well to the heat & humidity. Other ranchers in the south have used 68F with great success.
- ♦ He has depth, volume, fleshing ability and a great temperament.

DDA Dazeler 2E

Calved 1/21/04 ♦ Reg. # 14663340 ♦ Tattoo 2E

FENLAND OF WYE
FAHREN OF WYE UMF 5830
FLORELLE OF WYE UMF 5229 #

DDA FAHREN 5Z

REG 13299980

CANDOR OF WYE UMF 7328

DDA ZELDA 791

MISS DIAMOND JUMBO 580 #

DHD TRAVELER 6807 #

OCC EMBLAZON 854E #+

DIXIE ERICA OF C H 1019

DDA GINNY 209

REG 14226676

DDA BARTOR

DDA GINNY 604

DDA GINNY 401

BW EPD	Milk EPD	Adj WW EPD	Adj YW EPD	Yrlg Scr EPD
80 +2.0	+8	773 +42	1037 +62	35.0 +.23
\$EN +24.31		\$W +29.77		

DDA Ginny 209 Mother to 2E



- ♦ What a great pedigree! Line bred back to our old 580 and 368 cow family. Traces to Fahren twice, Black Browe Jumbo three times, Banjo once and 580 twice. He has depth, length and great fleshing ability, on strictly a forage diet. Structurally very correct with a great temperament. His bull calves at DDA have averaged 78 pounds at birth, while his heifers averaged 72 pounds. ♦ DDA Dazeler 2E has developed into a very impressive bull. ♦ His Mature Weight is 2,465 lbs.; Mature Scrotal is 47 and Mature Height is 55.5.

DDA Favour 26F

Calved 3/19/05 ♦ Reg. # 15435944 ♦ Tattoo 26F

CAREER OF WYE
LODGE OF WYE
LORENA OF WYE

FAVOUR OF WYE

REG 6418161

VALOUR OF ARDRASS
FLORILLA OF WYE
PAMELA G OF WYE
LAMB DIN OF WYE UMF 6278
BEAR OF WYE UMF 6591
BLACKBIRD OF WYE UMF 6324 #

DDA ZELDA 421

REG 12094274

FAHREN OF WYE UMF 5830
ZELDA DIAMOND 902 #
MISS DIAMOND JUMBO 580 #

BW EPD	Milk EPD	Adj WW EPD	Adj YW EPD	Yrlg Scr EPD
82	-0.5	+7	593 +15	817 +20
\$EN +35.25		\$W +22.16		34.0 -13

- ♦ We have preserved some of the very best maternal Wye lines in his pedigree. Favour of Wye is the grand sire to Fahren of Wye. We feel that much of the good in Fahren is coming from Favour. ♦ The dam to 26F is also the dam to our DDA Broadside 52B. His grand dam, the 902 cow, was the mother to DDA Barty 47, who left great daughters in the herd. Her mother, the 580 cow, who stayed in production until she was 20 and her mother, the 368 cow, until 22 years of age. When I think of the maternal goodness and longevity in this pedigree, only one thing comes to mind - **Wow!**
- ♦ Calving ease looks very good. The average birthweight on his bull calves at DDA is 72 pounds and his heifer calves averaged 69 pounds.



DDA Pinebank 87I

Calved 4/29/08 ♦ Reg. # 16263493 ♦ Tattoo 87I

PINEBANK WAIG 5/93
PINEBANK WAIG 31/95
PINEBANK WAIG 58/93

PINEBANK WAIGROUP 41/97 +

REG 14959541

TUPURUPURU 838/86
PINEBANK 639/88
PINEBANK 663/85
OCC EMBLAZON 854E #+
DDA EMBLAZON 27C
DDA MELISA 824 #

DDA IRMA 440

REG 14663398

FAHREN OF WYE UMF 5830
DDA IRMA 227
DDA IRMA 068

BW EPD	Milk EPD	Adj WW EPD	Adj YW EPD	Yrlg Scr EPD
78	+2.2	+16	670 +38	n/a I+61
\$EN +15.49		\$W +27.43		n/a n/a

DDA Irma 440
Mother to 87I



- ♦ His mother is a model 27C daughter. This young bull will catch your eye and not let go. He is very masculine, deep bodied and easy fleshing.
- ♦ The Pine Bank 41/97 bull has proven to sire very easy fleshing, moderate framed offspring. His sons have averaged \$3,875 at our past three sales. Ole Farms (Alberta, Ca), purchased an outstanding individual, DDA PineBank 50H, for \$5,250 and Cedar Top Ranch (NE) bought DDA Pine Bank 32I for \$5,250. ♦ He is a bull that our customers in South America are very interested in.

DDA Lazer 114I

Calved 5/22/08 ♦ Reg. # 16256306 ♦ Tattoo 114I

FAHREN OF WYE UMF 5830
DDA FAHREN 21X
DDA MELISA 549

DDA LEDGER 76E

REG 14663459

BARTOR OF WYE UMF 5609
DDA ZELDA 409
MISS DIAMOND JUMBO 580 #
DHD TRAVELER 6807 #
OCC EMBLAZON 854E #+
DIXIE ERICA OF CH 1019

DDA SANDY 215

REG 14226679

DDA SHOSHONE 34X
SANDY 080 DDA
MISS DIAMOND JUMBO 587

BW EPD	Milk EPD	Adj WW EPD	Adj YW EPD	Yrlg Scr EPD
77	-0.9	+15	634 +24	n/a I+40
\$EN +20.83		\$W +24.90		n/a I-0.26

- ♦ Lazer 114I is an outstanding looking bull with great temperament.
- ♦ His mother is a model cow from a great cow family with a lot of longevity.
- ♦ Outstanding calving ease bull!
- ♦ We sold an interest in the him in Australia and we've retained possession and semen rights.

"The fleshing ability of these cattle has been bred in, not fed in."



The Diamond D Angus Story

I am the third generation DeBoo raising functional Angus cows. It all started with my grandfather and grandmother (Charlie and Mary) in the 1950's. At that time, Charles was the only registered Angus breeder in the Golden Triangle area of Montana. In the early days, he owned a bull called Pattern of Wye. Pattern of Wye was instrumental in shaping the future for DDA.

In 1972, my grandfather's life was cut short after hip replacement surgery. He died less than 24 hours later.

My dad and mom (Don and Janet) were married in 1957 and started raising cows on shares with my grandparents, on a small ranch 10 miles southwest of Valier. My Mom and Dad raised 7 kids on this small operation. Needless to say, everyone needed to learn how to work and be very thrifty and efficient. That also included the cows.

In 1962, my Mom and Dad bought their first registered Angus heifers. They continued raising commercial cattle at that time. Due to the influence from Pattern of Wye, my Dad learned that all cows were not created equally. In the 1960's, most cattle were very short and blocky; they would have been a frame score of 1 or maybe in the negative figures. The Wye cattle were the larger framed cattle for the time period. The industry trend changed in the late 60's and early 70's to larger framed cattle and the Wye cattle became very popular. There were a lot of very functional cattle at that time. The trend continued to go larger and larger framed in the late 70's and 80's. My parents tried to follow the trend until the early 1980's.

I am very thankful that at that time my parents knew what a really good functional Angus cow was like. It did not take them long to understand the direction the industry was headed and this was not the path they wanted to be on. Due to the influence of the Pattern of Wye bull in the early 70's and the direction the whole industry was headed, Diamond D Angus knew they didn't want to follow this route. They decided with the knowledge of the old Pattern Bull, they would once again go to the Wye herd for their genetics. My parents spent many years selling bulls private treaty to repeat commercial buyers.

After working 6 years as a mechanic for John Deere, I (Mark) moved back to the ranch in 1988. We had our 1st production sale in the spring of 1989 in an old barn. Looking at it today, I still wonder how we did it. At that time, we were selling about 50 bulls at the sale. Perhaps our competition was averaging more per bull than we were, for it was the start of the big EPD race.

We continued to line breed for functional, maternal and efficient traits. This was not a popular or easy path to be on at the time. I am 100% convinced it was the proper path to take.

In 2006, we had our first fall production sale where we sold long yearling forage developed bulls. I would challenge any registered breeder to forage test your bulls if you really want to know what they are made of. This has proven to be a very good change for DDA. In recent years, we are selling our genetics all over the US, Canada, and Argentina.

We now sell about 130 bulls every fall and about 100 bred females at our production sale. This is our 7th annual Sire Directory where we offer our time-tested line bred genetics.

Testimonials About Diamond D Angus...

"Much like many commercial cow / calf producers we got caught up in the large-framed and excessive growth Angus cattle. The combination of extreme birth weight, milk, growth and frame had a direct impact on our break-even costs. With this type of cattle we had lost the true characteristics that had made the Angus breed such a popular range cow. Realizing the need to improve cow efficiency and to put back the essential traits a range cow requires in our environment led us to Diamond D Angus. As seed-stock producers they have not deviated from their original goal of what the Angus breed should look and produce like. Since infusing Diamond D genetics into our herd by A.I. and bull purchasing we can see dramatic improvement in the quality of our cattle. We found the 21X bull to be the best heifer bull we've ever used. His calves were born unassisted, grew well, and were extremely consistent. Diamond D cattle are moderate-framed, early-maturing and have tremendous fleshing ability. They also have bred-in traits that are often overlooked in this industry such as udder quality, longevity and cow efficiency. Many breeders claim to have balanced-trait genetics, but Diamond D Angus can honestly stand behind that claim. It's nice to know that there is a seed-stock producer that is willing to look out for our interests instead of chasing fads. Thank you and keep up the good work."

Lanell & Kelly Ashley
B & O Ranch - MT

Tuesday, Sept. 2, 2004
Mark,

It sure was good to see the DeBoo Angus cow herd again. I like what I see! 21X has left some beautiful daughters as well as OCC Emblazon. What a great compliment to Fahren genetics. To see that much maternal, function and pounds in an extremely moderate package is almost unbelievable. 27C and 28A will make a great contribution.

Dr. Ron Bolze
Blair, Nebraska

Thank you and your dad for working so diligently with the angus genetics over the last 40 years. I was really impressed with seeing your herd of cows. I will have to come back to get a better understanding of what you have done. I was very impressed with the uniformity of the cows. The size is moderate, the dispositions excellent and the physical displays of great meat characteristics very present. I was especially impressed with the bulls. They are massive in depth of body and fleshing all on forage {bred in not fed in}. I look forward to working with you in the future to create an outstanding herd here in Wyoming.

I should tell you that I looked at quite a few cattle before I got to you. These included great angus herds and some Irish Black cattle. The herd you have built looks the best. One thing that impressed me most was when I measured two year old DDA E5H using Jan Bonsmas' method. I had a difficult time finding the dip in E5H's vertebrae because of the muscling between his front shoulders. I had just measured two 2 year old Irish Black bulls a few days before that are noted for their meat characteristics and carcass merit and there was no comparison. E5H was 5 inches wider on the top of his shoulders and I had no problem at all finding the dip of the Irish black bulls because their back bones were right there not covered in meat like E5H. Great job in breeding that bull!!!! . I am sending you the linear measurements for several of the animals I have measured. I have a program to interpret the numbers, if you want I will send it. You can see that E5H is 6 inches larger in his heart girth than his top line and he is 6.5 and 5 inches wider than the Irish Blacks at the same age.

I noticed you have approximately 260 cows on your farm and your sale listed 110 bulls for sale. This to me speaks volumes to the prepotency of your breeding program. I was careful to watch your DVD for quality of bulls from front to back. They all look uniform. To sell that high a percentage of quality bulls, you have got to be on the right track.

Terry Jones
WY Angus

Grass Fed Beef at Diamond D Angus

The cattle here at Diamond D Angus remain consistent over generations because we have followed the same reliable program for many years. Our breeding program has proven that you don't need to breed for extreme numbers to have great cattle. We feel that if you breed for extremes, you will lose the basic traits which make the Angus mother cow great. The only extremes you will find at Diamond D Angus are extremely functional, efficient cows.

The grass-fed beef market is an additional benefit here at the ranch. Diamond D Angus has "proven genetics" which are suitable for the grass-finished beef market, and as always, are still suitable for the feedlot. Ultrasound and research have confirmed that these cattle are superior in tenderness. In fact, Diamond D Angus customers have reported over 70% acceptance to Certified Angus Beef. The national average is less than half of that.

Remember, efficiency has more to do with profit than any other trait. We have blended a unique combination of economic type traits designed for the commercial cattlemen, feed-lots, and packers, which will be an outcross to most herds.

Thanks to the fleshing ability of our cattle, our cows, calves, and long yearling bulls look great without supplement or creep.

If you like good, maintenance-free Angus cattle, plan to attend our Pounds for Profit Sale Thursday, November 10, 2011. You will not be disappointed!

COW / CALF RATIO

We calculate adjusted wean efficiency for each cow/calf pair. Adjusted wean efficiency is computed as the ratio of calf's adjusted 205 day weight to the cows adjusted weight. The adjusted cow weight is estimated by a process of rating each cow's body condition and giving her a score. A score of "5" is the median (no adjustment taken), 80 pounds is subtracted from her weight for a score of "6" and 80 pounds is added to her weight for a score of "4". By adjusting cow weights to equal body condition scores, it rewards cows that produce a bigger calf while maintaining her own body condition. Adjusted cow / calf ratio is shown for each sale bull in the fall sale catalog.

American Angus Association Cow Energy Value (\$EN)

A Cow Energy Value (\$EN) is available with the Spring, 2005 EPD release to assess differences in cow-energy requirements, expressed in dollars per cow per year, as an expected dollar savings difference in future daughters of sires. **A larger value is more favorable when comparing two animals.**

The bulls pictured in this catalog have an average of +23.40 (\$EN), and the industries' average on bulls is +2.84 (\$EN). In this example, the expected difference would be $+23.40 - +2.84 = +20.56$ savings per year per animal.

After analyzing the new (\$EN) number and (\$W) number from the American Angus Association, we were curious how the DDA Fahren 21X's numbers would stack-up compared to all the bulls in the breed. We entered 21X's numbers and asked the database to find all the bulls that were as good as, or better than, the 21X bull. In the entire Angus breed, there were no bulls that had better numbers than 21X on the \$EN and \$W.

In the past, the American Angus Association has had many numbers to measure production. Cattle with the most production also require the most inputs. It is very good to see the association develop a number that could help with profit, not just production.

Temperament & Udder Scores

Diamond D Angus feels it's very important to record temperament and udder scores. There are no EPD's on some of these very important traits. Considering the safety of the crew and the ease of handling the cattle, we feel it's well worth our time to score and cull the animals that don't meet the standards we have set. The performance, efficiency, and meat quality will improve with docile cattle.

There is no such thing as a perfect cow, and you have to decide which traits you want or need.

A few years ago we started a program of keeping records on the temperament and udder qualities of our females. We score them from 1 to 5 in each category.

UDDER

- 1 Very good.
- 2 Above average.
- 3 Average.
- 4 Capable of raising a calf.
- 5 A non functional animal.

TEMPERAMENT

- 1 Calm.
- 2 Slightly restless, shifting.
- 3 Squirring and occasionally shaking the squeeze chute.
- 4 Continuous vigorous movement.
- 5 Berserk, rearing twisting.

Semen Price List

Free ground shipping on orders over \$1,500; 50% off shipping on orders over \$1,000

*Prices subject to change without notice. *10% DISCOUNT on orders over \$1,000.

NAME	REGISTRATION	SEMEN	CERTIFICATE	VOLUME
DDA Emblazon27C	#14257843	\$20	\$35	_____
DDA Fahren 21X	#12773616	\$25	\$35	_____
DDA Emblazon 28A	#13647188	\$20	\$35	_____
DDA Sure Enough 6D	#14381036	\$20	\$35	_____
Carty of Wye UMF 6952	#11773159	\$50	\$35	_____
DDA Fahren 5Z	#13299980	\$15	\$35	_____
DDA Dazeler 2E	#14663340	\$20	\$35	_____
DDA Lodge E5H	#15974013	\$20	\$35	_____
DDA Pinebank 87I	#16263493	\$20	\$35	_____
DDA Freeman 68F	#15165535	\$20	\$35	_____
DDA Banjo 2124	#11789346	\$15	\$35	_____
Paramont Ambush 2172	#10239760	\$50		_____
Belview of Wye	#10748976	\$30		_____
DDA Banjo 1101	#11603400	\$50	\$35	_____
Buckwald of Wye	#10916619	\$12	\$35	_____
High Valley 4C6 Ambush	#12240901	\$50		_____
DDA Banjo E2B	#13825814	\$20	\$35	_____
DDA Banjo 10B	#13825698	\$15	\$35	_____
Band 234 of Ideal	# 8505294	\$70		_____
DDA Favour 26F	#15435944	\$15	\$35	_____
Hyland BC 0668	#15528673	\$20	\$35	_____
MH Mick 53	#15993873	\$20	\$35	_____
DDA Lazer 114I	#16256306	\$15	\$35	_____

SELECT EMBRYOS FOR SALE

Call, Write or E-mail your order to: DIAMOND D ANGUS

Mark DeBoo ----- 1-406-279-3633 ----- 1-406-799-3480 cell ----- dda@3rivers.net

Don DeBoo ----- 1-406-279-3563 ----- 1-800-932-6487 ----- ddangus@3rivers.net

1133 Valier Dupuyer Rd., Valier, MT 59486 ♦ www.diamonddangus.com

As founder and President of Thousand Hills Cattle Company, I have examined over five thousand 100% grass fed cattle over the past five years. The fat open 24 month old heifers Mark ships me every spring are consistently the best cattle I kill each year; excellent marbling and backfat, large ribeyes, calm dispositions, great tenderness and fine muscle texture. My only complaint is that there aren't enough of them and they make the rest of the fat cattle look bad!

In addition to the desirable carcass qualities, because of the tight breeding and ruthless culling over the years, I like all the DDA cattle I've seen at their sales - they would all work perfectly in my program. Please consider using DDA bulls, especially if you are in MN or the Dakotas, because I want to purchase more DDA bred fats and yearlings.

Todd Churchill ♦ Thousand Hills Cattle Company

Mark your calendar for our
“Pounds For Profit” Sale
Thursday - November 10, 2011

At the Ranch - Valier, MT
Lunch Served at 11:30 a.m.
Sale at 1:00 p.m.

230 BLACK ANGUS SELL

- ◆ 130 Forage Tested Registered Long Yearling Bulls
- ◆ 5 Registered Red Angus Bulls
- ◆ 100 Bred Females
(50 first calf heifers & 50 mixed age cows)

Diamond D Angus
Don & Janet DeBoo
Mark & Cathy DeBoo
1133 Valier-Dupuyer Road
Valier, MT 59486

ADDRESS SERVICE REQUESTED

PRSR STD
AUTO
U.S. POSTAGE
PAID
Lewistown, MT
Permit No. 181



*Thank you
to our
past
customers!*